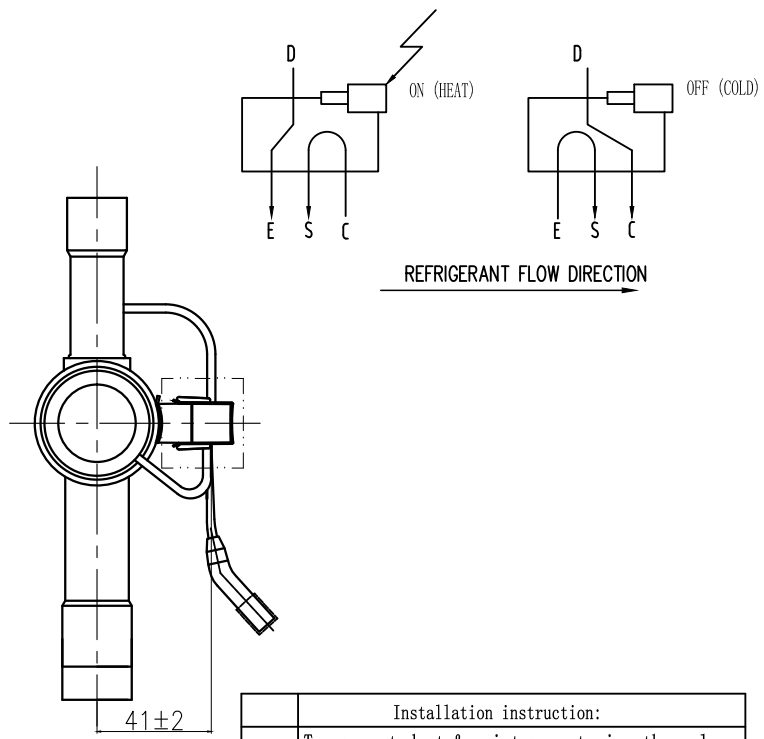
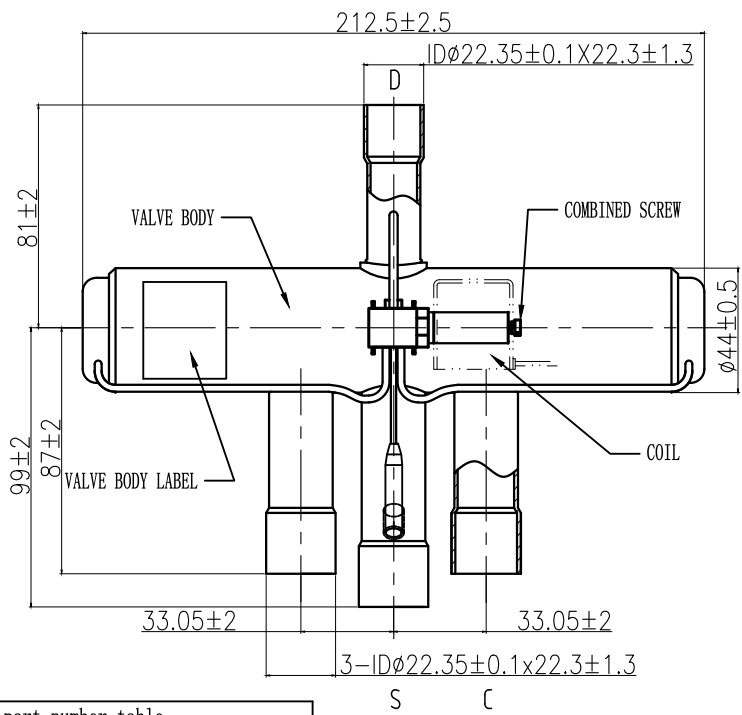


RV10AD14140X00
RN-YMDSB

DN: XX
Max Pres.:4.69MPa

Made in China

by Schneider Electric



1	Max Capacity(R410A):	See part number table
2	Suitable refrigerant:	R410A, R407C, R22, R134a, R404A
3	DN:	ø19.0mm
4	Max operating pressure:	4.69Mpa
5	Air tightness:	4.2Mpa
6	Burst pressure:	17.24Mpa
7	Internal leakage:	less than 6000CC/min(under normal temperature and 0.98Mpa air pressure)
8	Maximum operating pressure differential:	3.1Mpa
9	Minimum operating pressure differential:	0.1Mpa(ensure sufficient air flow during test)
10	Operating coil voltage:	not less than 85% of the rated voltage
11	Application temperature:	-20℃/+65℃
12	Environment:	humidity less than 95% RH
13	Recommended screw torque for coil:	2.0 Nm
14	Suitable media temperature:	-20/+121℃ (defrosting moment -25℃)
15	Mechanical life:	>165000

Installation instruction:	
A	To prevent dust & moisture entering the valves, tubes are provided with protection tube caps
B	Valve body should be protected with water or wet clothes during brazing, in order not to exceed 120 ℃.
C	Recommended mounting position is horizontal also refer to technical literature

						4-way Reversing Valve	RV10AD1414			
							Marks		Weight	Ratio
								B		
							Total 1		Page 1	
						RV10AD14140X00	 by Schneider Electric			
Label	No.	Modify	File No.	Signature	Date					
Designer				Standard						
Checker										
Verifier				Approval						
Processor				Date						